

# Transforming

INSIDE + OUT



*The Word became flesh and blood  
and moved into the neighborhood.  
Generous inside and out.*

John 1

  
Grace  
Lutheran  
Church



## OUR MISSION

Grace Lutheran Church is a community of faith united by God's love to listen, grow, and serve in Jesus' name so that all might experience grace.

## OUR VISION

Inspired by Christ to:  
Accept everyone  
Care compassionately  
Deepen connections  
Share God's love

Dear Grace Family,

The last two years have been filled with change. From two new pastors, to being church in a pandemic, to worshipping in new ways, we have been transformed.

Throughout it all, God has been faithful, leading us forward to live out our mission: to be a community of faith united by God's love to listen, grow, and serve, so that all might experience grace.

Our Vision Board and Building Task Force have been diligently working to discern the next steps related to the future flourishing of our church. We believe God is leading us to a time of transformation, both inside and out.

Now is the time to invest in our church so that we might better minister to our congregation and serve as a community hub. This transformation of our physical spaces invites us to an inner transformation, allowing God to know us, speak to us, and change us.

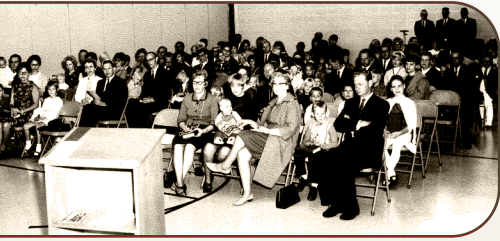
I am excited about this next step in the life of our church, and I look forward to what God will do within us, through us and beyond us. Thank you for joining this journey of *transforming, inside and out*.

Blessings,  
Joanna Mitchell  
Senior Pastor



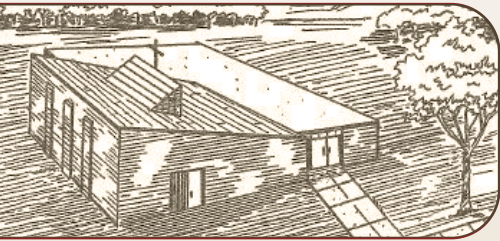


# OUR HISTORY



September  
**1967**

The first worship was held in the Wilson Elementary School Gymnasium on Sept. 10, 1967.



March  
**1969**

The first Sunday Worship in Grace Lutheran Church was held on March 2, 1969.



August  
**1972**

Seeds of Grace (Golden Rule) Child Care opened on August 28, 1972.



March  
**1981**

The third expansion dedication of new worship center, offices, and narthex.



December  
**1992**

The fourth expansion dedication of expanded nursery and additional classrooms

# WHO WE ARE TODAY

The challenges of COVID-19 have made things difficult over the past two years, God has been faithful, and our community continues to be united by God's love and inspired to welcome and serve others.

**Our congregation has been committed to responding to current issues that affect our community and life together:**

- We have had an ongoing group engaged in Conversations on Race and Culture
- Our mental health team continues to bring awareness and educational opportunities related to mental illness
- We have generously responded to needs throughout the pandemic by providing food and resources for people locally and globally
- Grace has shown support and care for local police and first responders by sending cards, snacks, and water
- Grace has provided five preschool and childcare scholarships to Seeds of Grace families who have struggled in the pandemic





# A GLIMPSE OF GRACE

**500** families are active in the life of Grace Lutheran

**267 + 60** average in-person worship + average online viewers per week since September 2021

**67** youth are preparing for Confirmation

**62** children participate in Sunday School or Wednesday evening programming

**20** youth went to Christikon Lutheran Bible Camp in Montana

**6** months of the year, from May to October, Grace hosts the local farmers' market

**6** charter members are still part of our community

**3** Community Food Truck events were hosted to strengthen relationships with our neighbors

## Seeds of Grace

Seeds of Grace (formerly known as Golden Rule) is a major ministry of Grace Lutheran providing affordable Christ-centered childcare and early childhood education for families in our community. Every day, the children and their parents are molded and nurtured in love and faith by their wonderful teachers and the staff at Seeds of Grace.

Pastors Joanna and Maria lead weekly chapel, sharing stories of faith with the children. We are committed to strengthening the relationship with our childcare center and are excited to watch it grow.

Seeds of Grace provides care for:

**12**  
toddlers

**40**  
preschoolers  
(there is a  
waiting list!)

**8**  
babies will be  
cared for in the  
Infant Room that  
opened this winter





# OUTREACH

Local and global outreach and service continues to be a priority at Grace

## LOCAL

Grace has established close partnerships with local organizations recognizing that in forming relationships we can better respond to the growing needs in our community.



72 families have received food through Grace's May All Be Fed Food Shelf or have been assisted with rent, housing payments, or other needs through Gifts of Grace



40-90 people are fed delicious and nutritious meals monthly through Family Table



Our partnership with Sand Creek Elementary provides students and families with the following: hats, mittens, winter wear, school supplies, holiday food baskets, Christmas presents, and ongoing support for teachers, administrators, and other staff



Serve food for the homeless at Our Saviour's in Minneapolis 6 times a year



Weekly delivery of food to Stepping Stone Emergency Housing

## GLOBAL

We listen to needs, grow in faith and knowledge, and serve communities in Rakai, Uganda, and Haiti.

### Grace 4 Rakai



Grace members sponsor over 120 children allowing them to be fed, educated, and supported.

We partnered with African Children Today to provide over 3000 meals during COVID.

Over the years we paid for the construction of the Amazing Grace Bakery which employs 35 people and provides bread for 300 women to sell in local markets.

We continue to support the school financially, and our quilters provide quilts for all students.

### Grace 2 Haiti

Grace has an ongoing commitment to Haiti and has been traveling and working to provide water, electricity, sewing machines, health care, education, housing and more for the people of Haiti.

Grace members have built a home for a family in Haiti, taken in nine abandoned children, built Grace's Home for Abandoned Kids, and currently sponsor children, providing them with an education and daily food.

Grace has sent teams to Haiti 16 times since 2012, creating lasting, deep relationships with the people in Williamson and Luly.



# Transforming INSIDE + OUT

Transforming Inside & Out is a generosity campaign to create welcoming and updated spaces at Grace Lutheran Church which reflect our values, support our ministries, and transform how we gather, connect, worship, and serve.

## **We serve a generous God who knows and loves us, inside and out.**

As we allow God to stretch us, we will become increasingly aware of the needs around us, and our hearts will be drawn to share God's love with our neighbors in new ways. We believe that this generosity campaign will result in spiritual growth for us individually and collectively, and that the season ahead will be one of the most memorable chapters in the life of our church. We believe God is calling us to enter a period of increased giving to help us transform our lives, our ministry, and our building.

## **OUR GENEROSITY TEAM**

We have an opportunity to extend God's grace through our welcome, connections, and service to our greater community. Our values and the needs of our ministries, as well as key challenges within our current building, have led Grace Lutheran Church to embark on a three-year capital campaign, Transforming Inside & Out. Along with transforming our church building we will be working to transform ourselves so that we can better serve our own faith family as well as our community.

Transforming Inside & Out is not simply a capital campaign. It is so much more than that. This generosity campaign is an opportunity for personal reflection and an invitation to spiritual growth. It is an opportunity to think about God's generosity in new ways. How has God's abundant love and grace impacted your life? What role has Grace played in your faith journey? How can you and your family help your church reach others in need?

Our current building has limitations and barriers, and we look forward to new, more inclusive gathering spaces. We can envision the benefits of improving the acoustics in our sanctuary for in-person and online worship. An improved, more welcoming main entrance, inclusive bathrooms, and a larger food shelf will also impact how we serve and interact with people that God brings to our doors from our community.

This campaign is about more than physical changes; God will transform our hearts as we prayerfully reflect and consider God's provision in our lives and our response to God's generosity. Thank you for joining us on this journey!

Generosity Team

Greg Ackerson, Tracie Russell, Jackie Glockner, and Nancy Jenkins



# Transforming Our Spaces

## CREATE A MAIN ENTRANCE ▶

Because we value welcome and connection, we want people to easily locate our entrance and be greeted well upon arrival. New offices near the entrance will benefit visitors, congregants, and staff.



## UPDATE SANCTUARY

Worship is often the first experience guests have within our community and one of the main ways we share God's love; new lighting and improved acoustics will transform our worship space and capabilities.

## IMPROVE FELLOWSHIP HALL

We will make this space more inviting and adaptable for groups (Grace Groups, Bloodmobile, Life Line, Boy Scouts, among others) by improving lighting and storage. Transforming this space will nurture our connections inside and outside our community.

## IMPROVE SECURITY OF OUR CHILD CARE CENTER

We have listened to the needs of our childcare families and our members, recognizing that we need safer places for our children during the week and during church activities. Renovated classrooms with internal restrooms and sinks will be a blessing to kids, families, and teachers.

## RENOVATE RESTROOMS

We welcome all people and accept everyone, which means we need ADA accessible restrooms and a gender-neutral restroom.

## WIDEN HALLWAY TO OUR FELLOWSHIP HALL ▶

We value connection and want to encourage conversations and gatherings. A wider main hallway will provide space to gather and easier access to our Fellowship Hall.

## EXPAND FOOD SHELF

Because we care compassionately for those in our community who are struggling to put food on the table, we will create a new and better space for the Food Shelf.

## REPLACE THE SPACE FROM OUR PORTABLES

Our aging portables must be removed. We will replace this space by adding classrooms and expanding our youth room because we want to share God's love with children and youth in our childcare center, Sunday School, and Catechism programs.



## ADDITIONAL BUILDING ENHANCEMENTS

Our building is an essential vehicle for our ministry. Because of this we need to maintain and improve our facility. Therefore, we will replace portions of the roof, upgrade the HVAC system, resurface our parking lot, and create new storage space.

**Total Cost for our Building Transformation: \$2.2 million**  
**Goal of Transforming Inside & Out Campaign: \$1.2 million**

Remaining costs will be paid through savings from the sale of Nightingale property, capital savings, and a manageable mortgage.

**WILL YOU PARTNER WITH US  
IN THE TRANSFORMING INSIDE & OUT CAMPAIGN  
AND ALLOW GOD TO TRANSFORM  
OUR BUILDING, OUR LIVES, AND OUR COMMUNITY?**

# HOW WILL YOU RESPOND?

You are invited to join in a spiritual transformation by taking faithful steps in generosity.

- **PRAY** that God will open our hearts, minds and spirits, multiplying our efforts within the Transforming Inside & Out generosity campaign so that we can invest in our facilities and enhance our ministries.
- **COMMIT** to taking a step forward in your generosity journey—we are striving for 100% of our families to be involved in this campaign. Imagine what more God could do if we all united with our hearts, hands, and finances to transform ourselves, our neighbors, our community and the world!
- **GROW** by participating in the Transforming Inside & Out Sermon Series: February 5-6, 12-13, 19-20, 26-27, and March 5-6.
- **GIVE** generously in a way that changes you.

You may not think that your gift matters when compared to our total goal for Transforming Inside & Out, but it does!

**Every gift matters to God.** It's not about the amount, but what that amount means to you.

Use this guide to see how your gifts can add up over three years.

## Guide to Giving

**\$1,200,000 GOAL**

(36-month commitment)

GIFTS	3-YEAR GIFT OF	ANNUAL GIFT OF	MONTHLY GIFT OF	WEEKLY GIFT OF	CUMULATIVE TOTAL
1	\$200,000	\$66,667	\$5,556	\$1,282	\$200,000
1	\$150,000	\$50,000	\$4,167	\$962	\$350,000
1	\$100,000	\$33,333	\$2,778	\$641	\$450,000
2	\$75,000	\$25,000	\$2,083	\$481	\$600,000
4	\$40,000	\$13,333	\$1,111	\$256	\$760,000
7	\$20,000	\$6,667	\$556	\$128	\$900,000
11	\$10,000	\$3,333	\$278	\$64	\$1,010,000
15	\$5,000	\$1,667	\$139	\$32	\$1,085,000
22	\$1,250	\$417	\$35	\$8	\$1,112,500
Many	< \$1250	< \$417	< \$35	< \$8	\$1,200,000

**TOTAL GIFT GOAL: \$1,200,000**

*My Commitment*

**WAYS TO GIVE**

- one-time cash gift
- 36-month goal for giving
- stored resources (stocks, IRA, savings, etc.)  
description of stored resources gift: \_\_\_\_\_

**MY/OUR COMMITMENT**

I/we plan to give accordingly:

- weekly for 156 weeks \$ \_\_\_\_\_
- monthly for 36 months \$ \_\_\_\_\_
- annually for 3 years \$ \_\_\_\_\_
- a one-time gift \$ \_\_\_\_\_

**TOTAL 36-MONTH COMMITMENT AMOUNT**  
MARCH 2022 - MARCH 2025

\$ \_\_\_\_\_

I/we wish to discuss making an estate/legacy gift to Grace:  
 Yes  No

**MY/OUR CONTACT INFORMATION**

Name: \_\_\_\_\_

Address: \_\_\_\_\_

Phone: \_\_\_\_\_

Email: \_\_\_\_\_



# Creative Ways to Grow in your Generosity

We have all received grace upon grace through God's love in Jesus Christ. The Transforming Inside & Out campaign invites us all to give in response to God's grace, not out of guilt or compulsion, but as an act of worship.

## What could you sacrifice to free up resources for Transforming Inside & Out generosity campaign?

Many of God's people have been amazed at their ability to give more generously than they ever imagined. The following are examples of ways that you might do this as well.

### REDIRECT PRESENT EXPENDITURES

As we begin to exit the pandemic, some people are finding that money they had set aside for a vacation, or another expenditure was not used due to cancelled plans. Or perhaps you will finish paying off a car, student, or home loan. Could you redirect these funds to God's work at Grace?

to their church's campaign. Much to their surprise, they received an inheritance of several thousand dollars. They gave the entire amount to their church as part of their commitment.

### INCREASED GIVING WITH INCREASED INCOME

Some people receive periodic increases in salary or bonuses. In many instances, God's people have decided that they will commit the full amount of salary increases to God's purposes through a Generosity Initiative at their church.

### SACRIFICE EXTRA TIME

We know of an individual who decided to put off retirement by one year so that he could give the extra year of income to his church for their campaign.

### DONATE APPRECIATED ASSETS

Gifts of appreciated assets (often investment securities or real estate) can be very advantageous to both the giver and the church. We have a brochure and additional information about how to do this and would love to work with you about how to make this donation.

### COMMIT UNEXPECTED CASH

A couple had been praying for weeks about their commitment

# Future Floor Plan



- COMMUNAL SPACES** narthex, sanctuary, hallways, fellowship hall, closets, kitchen
- new entrance, widened hallways, larger food shelf, additional storage near fellowship hall

- PRESCHOOL** Seeds of Grace Child Care Center
- addition of infant/toddler room, bathrooms within the classrooms, new secure entrance

- OFFICE SPACES**
- front office outside new main entrance, meeting room, additional offices located all in one area.

- CHILDREN AND YOUTH** classrooms and youth room
- larger youth room, classrooms located outside of sanctuary

- OTHER**
- new mechanical rooms and restrooms, updated bathrooms with ADA stalls, gender-neutral/family bathroom

# FAQ

## **Q: WHY IS THIS SO EXPENSIVE? SHOULDN'T THE PROCEEDS FROM THE SALE OF THE LAND COVER FOR THE FULL COST OF RENOVATIONS?**

A: The sale of the land only provides for the minimum renovations needed. To truly make our building welcoming and equip our church for the future we must invest in it. The changes that are being proposed will help us live into our values and make an even greater impact in our people and community

## **Q: WHY ARE WE INVESTING IN A PHYSICAL STRUCTURE IN THIS VIRTUAL AGE?**

A: One thing we heard during the pandemic is how much people missed connecting with others. Virtual events are important, but only get us so far. The church connects and welcomes people and provides a hub where we can gather to serve others. Our building is well-used by the community, and we want that to continue, so we need to invest in making it welcoming for all.

## **Q: WHY ARE WE DOING SO MUCH FOR THE DAYCARE?**

A: Seeds of Grace Child Care has been an important ministry of Grace for over 50 years. Wonderful teachers provide care and love to the youngest people in our community while also sharing the Gospel. Although we are providing new restrooms and increasing classroom space for the child care, these spaces will also be used on Wednesday evenings and Sunday mornings by our congregation.

## **Q: WHY ARE YOU CHANGING OUR SANCTUARY?**

A: 1) People struggle to see and hear in our sanctuary. We must update our sound system, projectors, and walls to improve acoustics and ensure people can fully participate in worship. 2) To better demonstrate the vibrancy of our congregation, our sanctuary (the first experience newcomers have to our church) needs to be updated, reflecting our welcome and our vision.

## **Q: WHY CAN'T WE JUST STAY THE WAY WE ARE?**

A: Because God is not done with us yet. God is calling us and moving us into the future to spread love and grace on the corner of Round Lake and Bunker Lake Boulevard.

**God is going to change us—not only our building, but all of us—through this project. We will be transformed in generosity, love, and connection, and will encounter the world in new ways.**

## **Q: IS THIS THE RIGHT TIME, AFTER THE PANDEMIC AND WITH SO MANY CHURCHES ON THE DECLINE?**

A: There is no perfect timing. However, there are new people attending worship regularly, searching for connection and a place to be grounded in their faith. Many people are asking spiritual questions and Grace can provide a safe place to explore their questions while being held in love.

## **Q: DO YOU REALLY THINK WE CAN RAISE THAT MUCH MONEY?**

A: Yes! We have a God of abundant generosity who will lead us providing gift after gift, after gift. We have been doing prayerful discernment and sought wise counsel to help us make these decisions, and believe this goal is achievable. These renovations will set Grace up for the future, removing the barriers that currently exist, and freeing us to share our faith and God's love.

## **Q: HOW MUCH DEBT WILL WE HAVE? WHAT WILL HAPPEN TO OUR CURRENT MORTGAGE?**

A: We paid off our mortgage (\$415,000) using a portion of the proceeds from the sale of the land. We will use the remaining money and additional capital funds raised to use as a down payment on our future loan. At the conclusion of our three-year generosity campaign, we aim to have an affordable mortgage equivalent to or less than the monthly payments we were making in 2021.

## **Q: WHAT CAN I DO?**

A: Be open to God's invitation to be transformed. Prayerfully consider how God is calling you to participate and grow through this campaign. Make a commitment to support the future ministries of God's work through Grace and share generously.

## **Q: WHAT IF I CAN'T FULFILL MY PLEDGE?**

A: That's OK—if something happens, it happens. We are here to love and care for each other no matter what. In all things we will hold you in grace. God invites us to trust in God's faithfulness and provision.

## **Q: WHY DID WE TITHE OFF THE SALE OF THE LAND, WHEN WE NEED WORK DONE ON OUR OWN PROPERTY?**

A: Everything we have is a gift from God. We are stewards of God's resources. We want to honor both the blessings and God's call to tithe.





# Transforming

INSIDE + OUT

**Will you join us in the  
Transforming Inside & Out  
generosity campaign allowing  
God to transform our building,  
our lives, and our community?**

Together, let's boldly move forward so  
that we can share the love of God in  
new ways in our community.

